

046858

RECEIVED
LARAMIE COUNTY
CHEYENNE, WY.

CERTIFIED LAND CORNER RECORDATION

88 JUL 20 AM 11 30

DESCRIPTION OF CORNER EVIDENCE FOUND, AND ORIGINAL RECORD (If known)
Found 6"x8" granite stone projecting 6" above ground with no visible markings .

S.17 S.16
S.20 S.21
T.18N., R.67W
6th P.M.

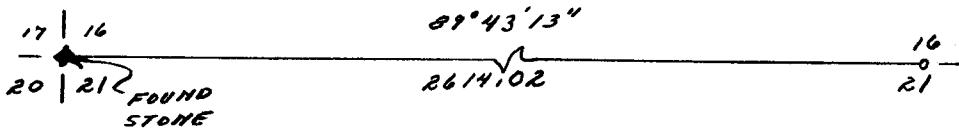
G.L.O. Record - Set sandstone 20"x8"x6"

DESCRIPTION OF MONUMENT AND ACCESSORIES ESTABLISHED
TO PERPETUATE THE ORIGINAL LOCATION OF THIS CORNER:

At the corner: Not remonumented

Accessories: See ties below

SKETCH, WITH COURSE AND DISTANCE TO ADJACENT CORNER IF DETERMINED IN THIS SURVEY.
(May Sketch or Paste Reproduction on Reverse Side.)



I, John A. Steil certify that I have carefully performed or reviewed the work done on the diagrammed corner as reported on this recordation form and approve the same.

John A. Steil
Signature of Surveyor

L.S. 2500
Registration No.

STATE OF WYOMING,

Office of Clerk and Recorder,

County of Laramie

This "corner record" was filed for record on the 20th day of July, 1988, was noted on the cross-index plat and is assigned page No. _____, in book No. _____.

Janet C. Whitehead
County Official

| | | | | | | | |
|-----------------|------------|----|------------|----|------------|------|------------|
| Cross Index No. | <u>N-9</u> | T. | <u>18N</u> | R. | <u>67W</u> | Mer. | <u>6th</u> |
| | | T. | | R. | | Mer. | |
| | | T. | | R. | | Mer. | |
| | | T. | | R. | | Mer. | |
| | | T. | | R. | | Mer. | |
| | | T. | | R. | | Mer. | |
| | | T. | | R. | | Mer. | |